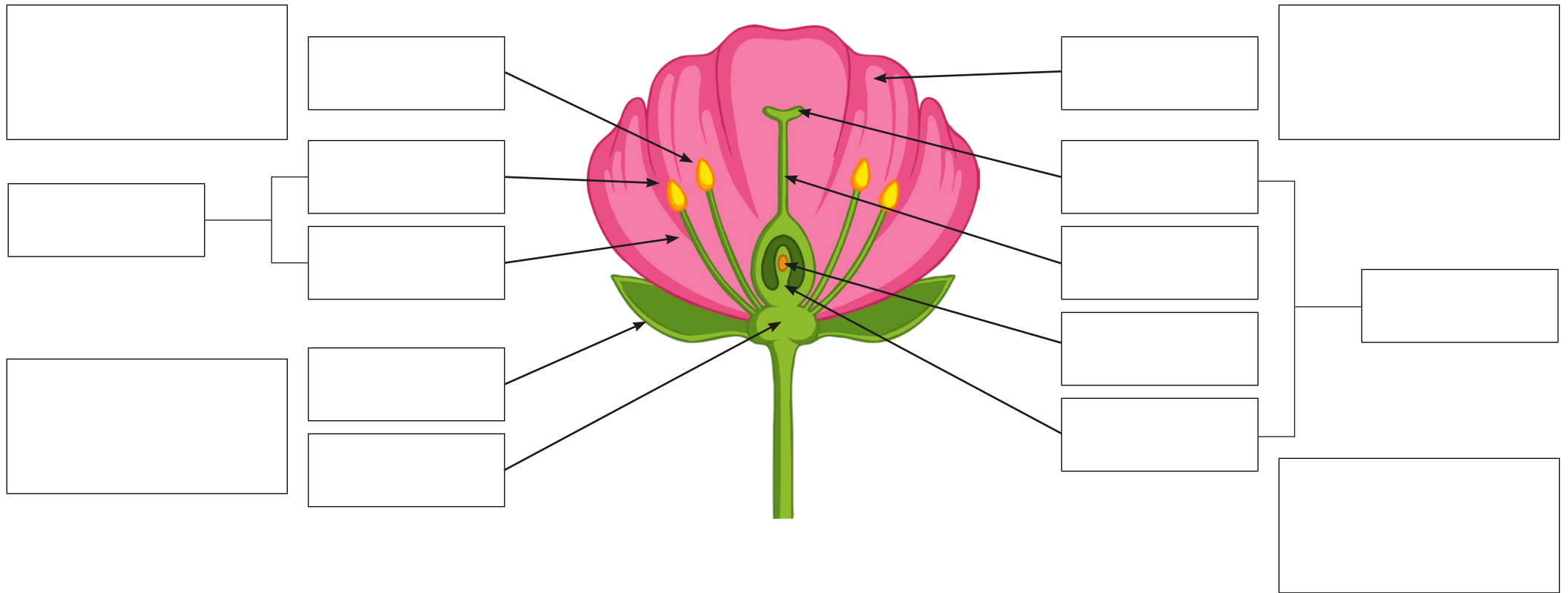


Structure and Function of a Flower **Cut and Stick Activity**

Cut out and glue the labels onto the diagram to show the different parts and functions of the flower.



Cut out the labels below and stick them onto the diagram to show the different parts of the flower.

pollen	carpel	petal	stigma	style	filament
stamen	receptacle	sepal	anther	ovary	ovule

Then cut out the descriptions below and stick them onto the diagram to show the different functions of the main parts of a flower.

This is the male part of the flower. It contains pollen grains which produce male sex cells.	This is the female part of the flower. The female sex cells are contained in the ovules.	These are often brightly coloured to attract insects for pollination.	These small leaf-like parts protect the flower inside the bud.
--	--	---	--